

# Black Elegance Basic

ASP M6-60 BE Series 300W-315W  
Monocrystalline PV-module in Black Design



## QUALITY & RELIABILITY

Best raw materials, optimized production process and accurate testing makes the quality difference



## GERMAN ENGINEERING

Best design by the art of German engineering



## SAVE INVESTMENT

Product warranty of 12 years  
and performance warranty of 25 years



## POSITIVE PERFORMANCE TOLERANCE

Up to +5 W plus-tolerance on output



## FOR ALL ENVIRONMENTAL CONDITIONS

Resistant against PID, sand, salt and ammonia



## STABLE AND STRONG

Capable to bear heavy snow loads up to 5400 Pa  
and wind loads up to 2400 Pa

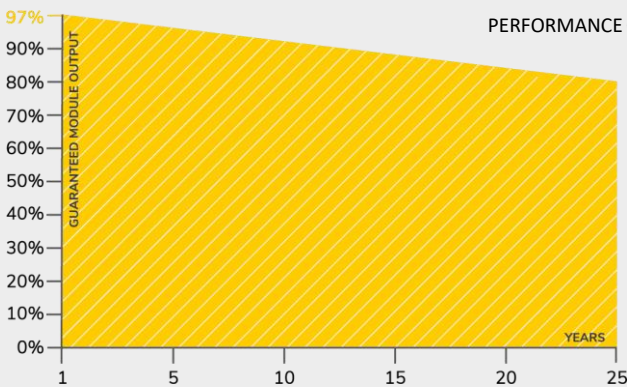


**12 YEARS**  
PRODUCT WARRANTY

## OUR PERFORMANCE GUARANTEE



**25 YEARS**  
PERFORMANCE GUARANTEE



## CERTIFICATES

SGS  
**TÜV**  
SAAR

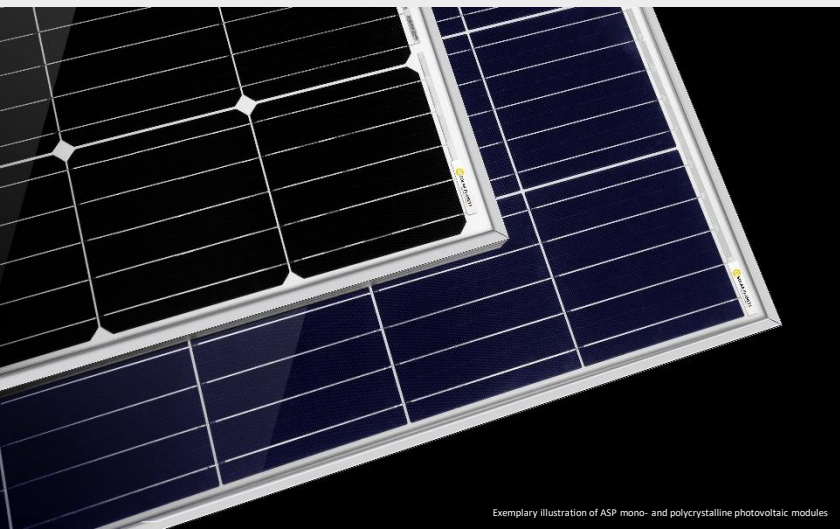
IEC 61215  
IEC 61730  
PERIODICAL  
INCEPTION

**SGS**

PID RESISTANT  
SALT MIST RESISTANT  
SAND RESISTANT  
CORROSIVE GAS (NH<sub>3</sub>)

**CE**

**CEC**



**α SOLAR PLANET**  
Enjoy the quality difference

# Black Elegance Basic Module

ASP M6-60 BE Series 300W-315W

## TECHNICAL DATA

		ASP300M6-60	ASP305M6-60	ASP310M6-60	ASP315M6-60
Maximum power	P <sub>max</sub> (Wp)	300	305	310	315
Maximum power voltage	V <sub>mp</sub> (V)	33.59	34.00	34.42	34.83
Maximum power current	I <sub>mp</sub> (A)	8.93	8.96	9.00	9.04
Open-circuit voltage	V <sub>oc</sub> (V)	39.35	39.56	39.77	39.97
Short-circuit current	I <sub>sc</sub> (A)	9.62	9.66	9.71	9.77
Module efficiency	%	18.32	18.63	18.93	19.24
Power tolerance	P <sub>max</sub> (W)		0/+5		
Maximum system voltage DC	V		1000		
Operating temperature	°C		-40 to +85		
Temperature coefficients of P <sub>max</sub>	%/°C		-0.38		
Temperature coefficients of V <sub>oc</sub>	%/°C		-0.29		
Temperature coefficients of I <sub>sc</sub>	%/°C		0.05		
Nominal operating cell temp. (NOCT)	°C		45±2		

The electrical data apply to standard test conditions (STC): Irradiance of 1000 W/m<sup>2</sup> with spectrum AM 1.5 and a cell temperature of 25°C.

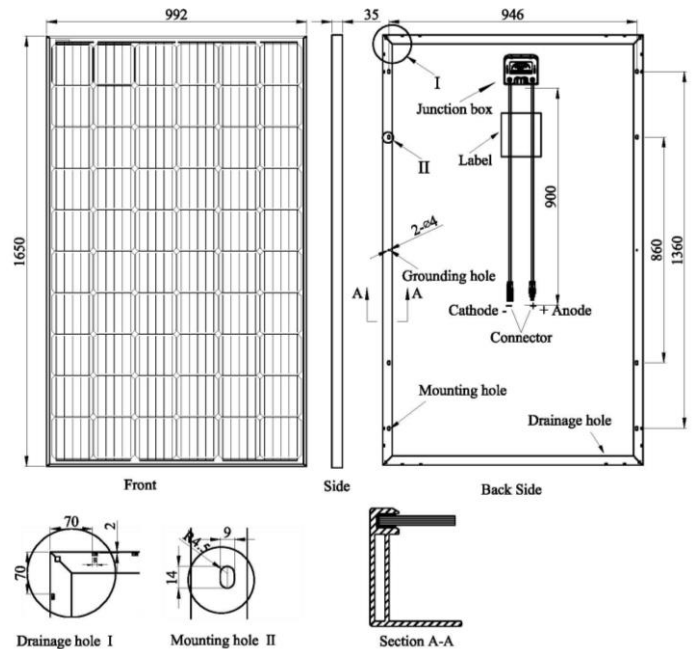
## MATERIAL CHARACTERISTICS

Cell type	Monocrystalline 156.75 x 156.75 mm
No. of cells	60 (6 x 10)
Dimensions	1650 x 992 x 35 mm
Weight	17.5 kg
Junction box	IP67 rated
Output cable	4.0 mm <sup>2</sup> , 900 mm
Connector type	MC4 / MC4 compatible
Hail resistance	Max. Ø 25 mm, at 23 m/s
Wind load	2400 Pa / 244 kg / m <sup>2</sup>
Mechanical load	5400 Pa / 550 kg / m <sup>2</sup>

## PACKING INFORMATION

Packing configuration	64 pcs / double pallet
Loading capacity	896 pcs / 40 HQ
Size / pallet	1685 x 1135 x 2390 mm
Weight	1220 kg / pallet

## DRAWINGS



Alpha Solar Planet GmbH  
Schwalbenweg 1 g, 86343 Königsbrunn  
GERMANY

Tel.: +49 8231 99190 70  
Fax: +49 8231 99190 89

E-mail: sales@a-s-p.solar  
Web: www.a-s-p.solar

