

# MonoPower Large Cells

ASP HM6-72 Series 380W-400W

Monocrystalline PV-module



## QUALITY & RELIABILITY

Best raw materials, optimized production process and accurate testing makes the quality difference



## GERMAN ENGINEERING

Best design by the art of German engineering



## SAVE INVESTMENT

Product warranty of 12 years  
and performance warranty of 25 years



## POSITIVE PERFORMANCE TOLERANCE

Up to +5 W plus-tolerance on output



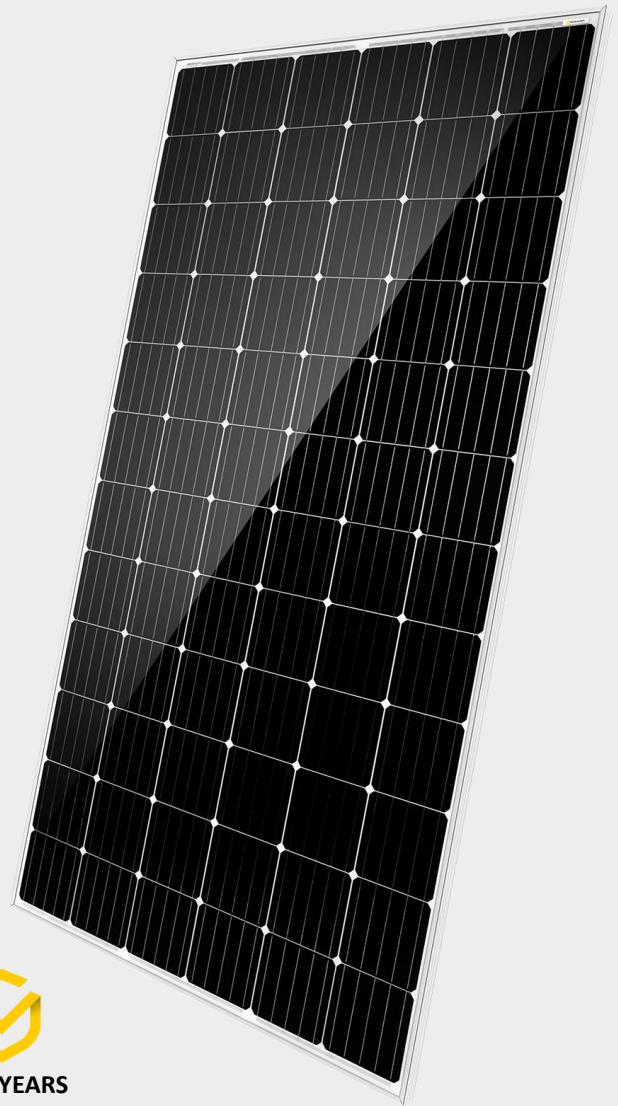
## FOR ALL ENVIRONMENTAL CONDITIONS

Resistant against PID, sand, salt and ammonia



## STABLE AND STRONG

Capable to bear heavy snow loads up to 5400 Pa  
and wind loads up to 2400 Pa

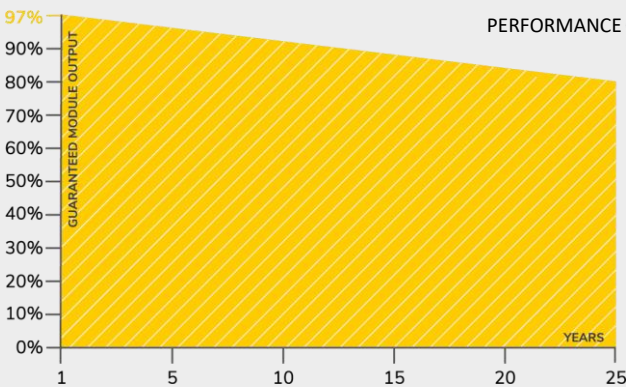


**12 YEARS**  
PRODUCT WARRANTY

## OUR PERFORMANCE GUARANTEE



**25 YEARS**  
PERFORMANCE GUARANTEE



## CERTIFICATES

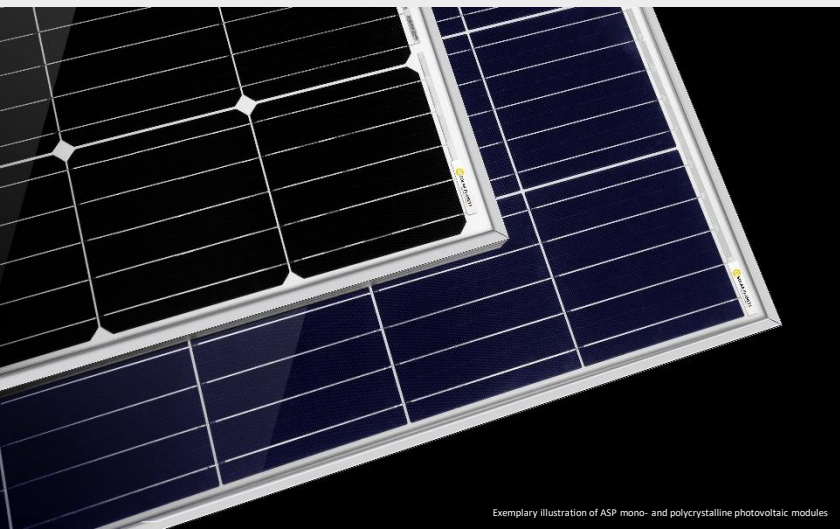
SGS  
**TÜV**  
SAAR

IEC 61215  
IEC 61730  
PERIODICAL  
INCEPTION

**SGS**

PID RESISTANT  
SALT MIST RESISTANT  
SAND RESISTANT  
CORROSIVE GAS (NH<sub>3</sub>)

**CE CEC**



**α SOLAR PLANET**  
Enjoy the quality difference

# MonoPower Large Cells

ASP HM6-72 Series 380W-400W

## TECHNICAL DATA

		ASP380HM6-72	ASP385HM6-72	ASP390HM6-72	ASP395HM6-72	ASP400HM6-72
Maximum power	P <sub>max</sub> (Wp)	380	385	390	395	400
Maximum power voltage	V <sub>mp</sub> (V)	40.50	40.80	41.10	41.40	41.71
Maximum power current	I <sub>mp</sub> (A)	9.39	9.44	9.49	9.54	9.59
Open-circuit voltage	V <sub>oc</sub> (V)	48.90	49.10	49.30	49.48	49.69
Short-circuit current	I <sub>sc</sub> (A)	9.75	9.92	10.12	10.50	10.59
Module efficiency	%	19.16	19.42	19.67	19.92	20.17
Power tolerance	P <sub>max</sub> (W)	0/+5				
Maximum system voltage DC	V	1000				
Operating temperature	°C	-40 to +85				
Temperature coefficients of P <sub>max</sub>	%/°C	-0.37				
Temperature coefficients of V <sub>oc</sub>	%/°C	-0.28				
Temperature coefficients of I <sub>sc</sub>	%/°C	0.048				
Nominal operating cell temp. (NOCT)	°C	45±2				

The electrical data apply to standard test conditions (STC): Irradiance of 1000 W/m<sup>2</sup> with spectrum AM 1.5 and a cell temperature of 25°C.

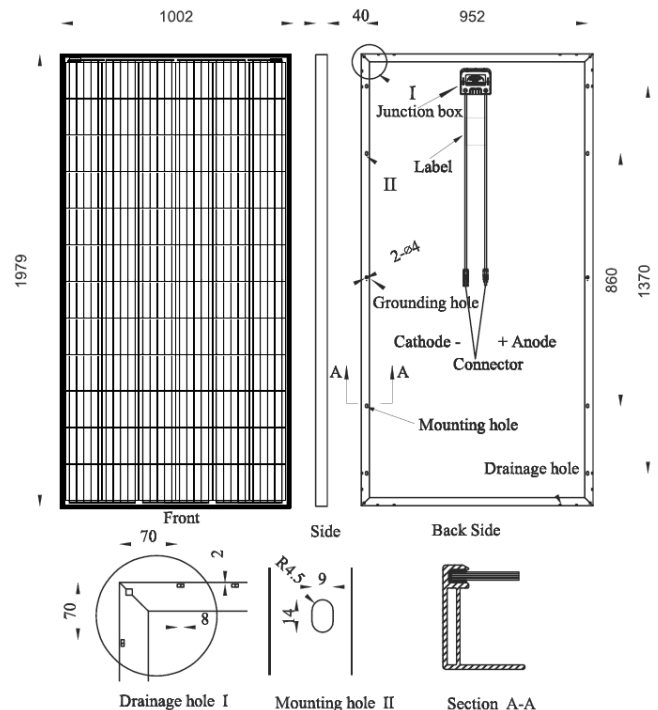
## MATERIAL CHARACTERISTICS

Cell type	Monocrystalline 158.75 x 158.75 mm
No. of cells	72 (6 x 12)
Dimensions	1979 x 1002 x 40 mm
Weight	22.5 kg
Junction box	IP67 rated
Output cable	4.0 mm <sup>2</sup> , 1200 mm length
Connector type	MC4 / MC4 compatible
Hail resistance	Max. Ø 28 mm, at 23 m/s
Wind load	2400 Pa / 244 kg / m <sup>2</sup>
Mechanical load	5400 Pa / 550 kg / m <sup>2</sup>

## PACKING INFORMATION

Packing configuration	56 pcs / double pallet
Loading capacity	616 pcs / 40 HQ
Size / pallet	2015 x 1120 x 2335 mm
Weight	1380 kg / double pallet

## DRAWINGS



Alpha Solar Planet GmbH  
Schwalbenweg 1 g, 86343 Königsbrunn  
GERMANY

Tel.: +49 8231 99190 70  
Fax: +49 8231 99190 89

E-mail: sales@a-s-p.solar  
Web: www.a-s-p.solar

